

# Shibuyajizai – Infinity, or Self-Territory

July 29 (Sat.) – September 17 (Sun.), 2017

## The final exhibition at Tokyo Wonder Site Shibuya!!

TWS Shibuya opened in 2005 as the second facility of Tokyo Wonder Site (TWS), which has been engaged in the discovery, nurturing and support of young artists since its establishment in 2001. Operating outside the existing frameworks of museums and galleries, the facility has been serving as a space for joint projects with alternative spaces and international institutions related to art and culture in Japan and abroad, and exhibitions introducing internationally operating creators from overseas, and creative young people in Japan. In October 2017, it will be reorganized as a new facility under the administration of the Museum of Contemporary Art Tokyo.

This final exhibition at TWS Shibuya introduces works by three artists who have been determining the world from their own bodies as starting points, and continue to expand the domains of their creative endeavors without being bound by the standards of art. We tend to apply classifications for all sorts of things, and make ourselves part of that in daily life. Like the boundaries between social positions, professions, ethnic groups and national borders, we sometimes draw dividing lines between ourselves and others in order to protect our existence and feel secure. However in exchange for that sense of security, it certainly also seems that we are abandoning our own freedom. In preparation for the 2020 Tokyo Olympic and Paralympic Games, the Shibuya neighborhood is continuously changing these days. Staged at a place where the past meets the future, this exhibition is an occasion for us to question modes for “ourselves” to “be”.

## Exhibition Outline

Exhibition Name: Shibuyajizai – Infinity, or Self-Territory  
Period: July 29 (Sat.) – September 17 (Sun.), 2017  
Venue: Tokyo Wonder Site Shibuya (Shibuya Workers' Welfare Hall 1F, 1-19-8 Jinnan Shibuya-ku Tokyo)  
Time: 11:00 – 19:00 (Last entry: 18:30)  
Closed: Mondays  
Admission: Free  
Organizer: Tokyo Metropolitan Foundation for History and Culture, Museum of Contemporary Art Tokyo, Arts Program and Residency Division  
Artist: Mari Ohno, Nao Nishihara, Ishu Han  
Website: <http://www.tokyo-ws.org/english>

### [ Press Contact ]

Akiko Ichikawa, Hiromi Fujii | Public Relations Section  
Tokyo Metropolitan Foundation for History and Culture, Museum of Contemporary Art Tokyo,  
Arts Program and Residency Division  
7-3-5 Toyo, Koto-ku, Tokyo 135-0016 (Located in MOT Temporary Office)  
TEL: 03-5633-6373 FAX: 03-5633-6374 E-mail: [press@tokyo-ws.org](mailto:press@tokyo-ws.org)

\*As of April 1, 2017, Tokyo Wonder Site is operated by a division of the Museum of Contemporary Art Tokyo.

\*From October 1, 2017, Tokyo Wonder Site will be named "Tokyo Arts and Space".

**Opening Talk** \* No reservation necessary / Admission Free / Available only in Japanese

Date & Time: July 29 (Sat.) 16:00 – 18:00  
Venue: Tokyo Wonder Site Shibuya  
Participating Artist: Mari Ohno, Nao Nishihara, Ishu Han

**TWS Shibuya Closing Event** \* No reservation necessary / Admission Free / Available only in Japanese

Date & Time: September 17 (Sun.) 19:00 – 20:30  
Venue: Tokyo Wonder Site Shibuya

**Exhibition Highlights**

This exhibition introduces three young artists who have participated in TWS programs such as " TOKYO EXPERIMENTAL FESTIVAL" and "Creator-in-Residence program".

**Mari Ohno** exhibits sound-based works on themes such as "human perception" or "phenomena of life/nature" in installations and performances. Integrating aspects of time and space, these works express the phenomenal characteristics of sound, and the characteristics of natural elements and processes. At the same time, they are vehicles for the artist's explorations of the relationship between nature and the man-made world.

In works and performances exploring the possibilities of working with audiences, **Nao Nishihara** excites the spectators' curiosity with unique and unusual sounds produced using musical instruments, wood, metal, or other familiar materials. Through his continued artistic experimentation with sound, vision and the human body, he examines how people perceive the sounds created by way of objects and the artist's own body.

Born in Shanghai, **Ishu Han** moved to Aomori at the age of 9. He creates video-based works that combine also elements of his own "identity" themed physical performances, to explore questions of "boundaries" and "territories". These works also highlight the relationships between the artist himself and other individuals as part of society.



Nao Nishihara performance  
"TOKYO STORY 2015" (TWS Hongo)

## Creator profile

### Mari Ohno

Participated in “TOKYO EXPERIMENTAL FESTIVAL Vol.8 — TEF Sound Installation”

Born in 1984. Based in London. Enrolled in a PhD at Goldsmiths, University of London.

Recent exhibitions: "Fluid Matter, Liquid and Life in Motion" (MU, Eindhoven, Netherlands, 2016-2017), "Art & Music -Search for New Synesthesia" (The Museum of Contemporary Art, Tokyo, 2012).

Award: Cafe OTO / Sound and Music Embedded (UK, 2015), Jury selection for 17th Japan Media Arts Festival (Agency for Cultural Affairs, Japan, 2014).



©Fluid Matter, Liquid and Life in Motion  
Photo: Hanneke Wetzer

### Nao Nishihara

Participated in “Exchange Residency Program <Berlin>”, 2014

Awarded a special prize for “TOKYO EXPERIMENTAL FESTIVAL Vol.8 — TEF Sound Installation”

Born in 1976. Based in Kanagawa, Japan. Graduated with an MA in Intermedia Art from Tokyo University of the Arts in 2011.

Recent exhibitions: "Cyber Art Festival 10" (St. Petersburg, Russia, 2017), "Ende Tymes VI" (Knockdown Center, New York, 2016), "Roppongi Crossing 2016: My Body, Your Voice" (Mori Art Museum, Tokyo). Recent performances: "Experimental Intermedia" (New York, 2016), "Issue Project Room" (w/ Aki Onda, New York, 2016), "Destination of the Stone" (w/ Min Tanaka and Rin Ishihara, Archa Theatre, Praha, 2016). Award: ACC Grant 2015 (New York).



TV News Russia Channel 1 2017  
<https://www.1tv.ru/news/2017/01/26/>

### Ishu Han

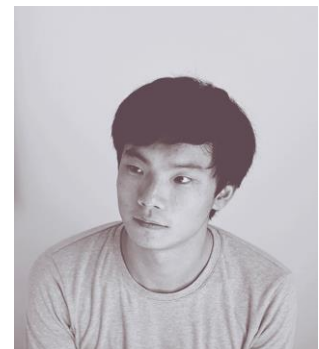
Participated in “Exchange Residency Program <Melbourne>”, 2013

Participated in “Local Creator Residence Program”, 2012

Born in 1987. Based in Tokyo. Graduated with an MA in Intermedia Art from Tokyo University of the Arts in 2012.

Recent exhibitions: "The Drifting Thinker" (MoCA Pavilion, Shanghai, 2017), "ESCAPE from the SEA" (National Visual Arts Gallery, Kuala Lumpur, Malaysia, 2017), "Sights and Sounds: Highlights" (The Jewish Museum, New York, 2016).

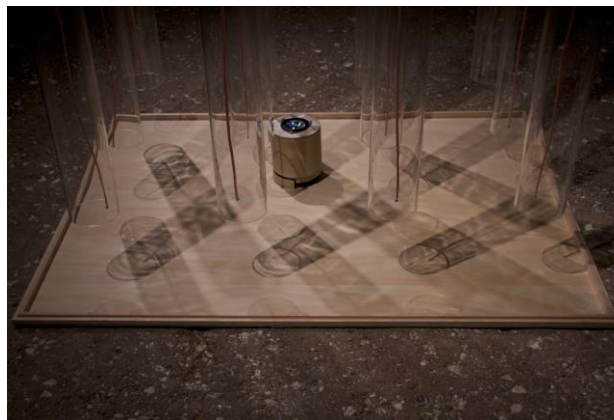
Award: ACC Grant 2014 (New York), New Talent Award ("Local Futures", He Xian Ning Art Museum, China, 2013).



## Press images



**1 Mari Ohno**  
*cells* 2016 Sound performance  
 Photo: Eungyeong Lee



**2 Mari Ohno**  
*acoustic cluster* 2013 Installation  
 Photo: Issei Yamagata



**3 Nao Nishihara**  
*Bling Bling* 2016 Mixed media  
 Installation view: "Roppongi Crossing 2016: My Body, Your Voice"  
 (Mori Art Museum, Tokyo, 2016)  
 Photo: Kazuyuki Funaki



**4 Nao Nishihara**  
*Oil Drum* 2017  
 Oil drum, motor, wheels, rubber ball, aluminum rod, wood  
 Installation view: "CYFEST 10" (St. Petersburg Stieglitz State  
 Academy of Arts and Design, Russia, 2017)



**5 Ishu Han**  
*Musical Chairs* 2015 Video installation, screen  
 Photo: Tadasu Yamamoto



**6 Ishu Han**  
*The thinker floats on the sea* 2016 Video