

## Season's Greetings and best wishes for a Happy New Year.



"From the Ilica to the cohue: Photography in penitentiary centers"



"upDate 2011111111111s"



"But Fresh"

### Emerging Artist Support Program 2012 – Exhibition

(2012/12/1-2013/1/14)

"These exhibitions are selected by open call for young curators and artists. We selected challenging plans and support their challenge."

"Proposals are also coming from the world. This year, we host a project from Venezuela, photography project for prisoners in prison."

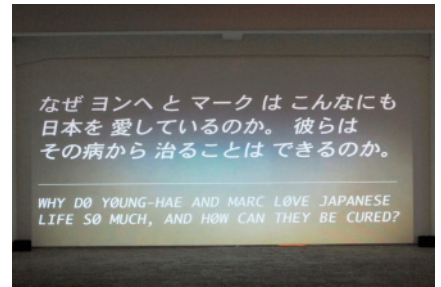
"In literature, often said, first book contains all the quality of the writer. Artists responded to their debut work by themselves."



Dinh Q. Le



Wit Pimkanchanapong



YOUNG-HAE CHANG HEAVY INDUSTRIES

### On the Agenda of the Arts "in the AIR"

(2012/9/21-2012/11/25)

"Le made new work on the relationship between Tohoku disaster area and Tokyo. Photos of Tohoku and Tokyo are mirroring each other."

"Wit went to mountain with his father and collected bee honey. After natural disaster, 311 in Japan and flooding in Thai, questioned 'value'."

"What is the role of artist? Workshop and mentoring by YCHI was exceptional experience."



Meeting



Sessions



Presentation Area

### Res Artis General Meeting 2012 TOKYO

(2012/10/26-2012/10/28)

"2000 participants, 100 speakers from all around the world. Thank you everyone for coming and supporting us!"

"Fortunately all workshops are full of audience. Did you miss the workshop? Don't worry, you can get record of all the workshop."

\* now in preparation.

"Time to exchange and network! Presentation of Artist Residencies from all around the world."



176 Kento Nito "Throwing for an unforeseen"



177 Yoi Kawakubo "And then there were none"



180 Eiji Moribe "Production ranch"

**TWS-Emerging 2012****(2012/5/12-2012/8/26)**

*"Who support emerging artist? When we started TWS, there were no official supporting structure in Tokyo."*

*"Every year we meet talented artists. TWS-Emerging facilitates developing their ideas, not just renting space."*

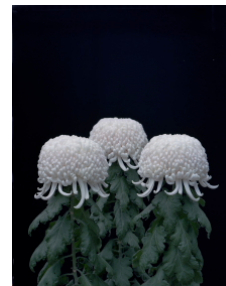
*"It is important to say, the City supports emerging talents. TWS encourages wonderful experiences of supporting emerging artists."*



TWS Shibuya installation view



Matthias Wermke &amp; Mischa Leinkauf

Tomoko Yoneda  
*Chrysanthemum, Hibiya Park I*  
2011, Type C print**TOKYO STORY 2011****(2010/3/10-4/29)**

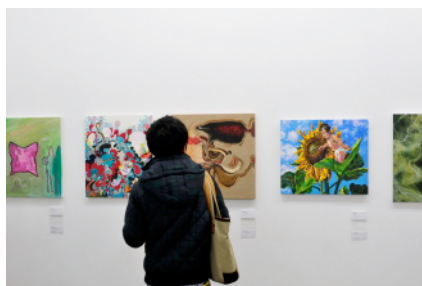
*"On the Agenda of the Arts 2011 focused on after 311 and collaboration within Asian artists. They move around Asia and inspired each others."*

*"Tokyo is a field of creation for creator-in-residence. Creators challenge far beyond expectations and show us never seen Tokyo."*

*"Tomoko Yoneda challenged social agendas in Japanese society spending a year here moved back from London."*

**Forum: Towers FUTURE  
RESIDENCY in Japan and Asia  
(2012/3/10)**

*"Residency is becoming more important tool of exchange and producing artwork. New visions are coming up from Asia."*

**WONDER SEEDS 2012  
(2012/2/4-2012/2/26)**

*"Buy=Support. You buy small paintings, it becomes supporting emerging artists. We sell most of 100 paintings!"*

**OPEN STUDIO (2012/4-2012/12)**

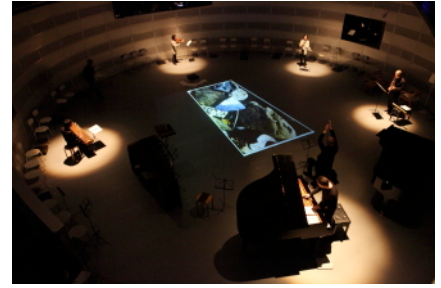
*"OPEN STUDIO is wonderful opportunity to encounter unexpected talents. Also great opportunity to see process of making art work. TWS hosts almost 100 creators a year."*



Meet the Japanese Contemporary Musician  
Vol.6 Ken'ichi Nakagawa  
×Sound × Art × Performance Part1



The Paper Ensemble <#8>



Ensemble Modern X Emerging Musicians X  
Visual Artists "3.11—Prayer"

---

**TOKYO EXPERIMENTAL FESTIVAL – SOUND, ART & PERFORMANCE Vol.6**  
(2011/12/5-2012/1/31)

---

*"All day long performance, by playing Olivier Messiaen's Catalogue d'Oiseaux" with the projection work by Dinh Q Le."*

*"Tokyo Experimental Festival always shows non-categorized and interdisciplinary performance."*

*"Experimental production work with composers, performers and visual artists with long time partner, Ensemble Modern"*

Sincerely yours,

Yusaku Imamura  
Director, Tokyo Wonder Site  
Counselor on Special Issues to the Governor,  
Tokyo Metropolitan Government